



DRENA™ SERIES

DrenaPave™ & DrenaMontage™



PERMEABLE INTERLOCKING CONCRETE PAVEMENT SYSTEM (PICP)

A FUNCTIONAL STORMWATER MANAGEMENT SYSTEM

STYLE		CODE	DIMENSIONS	CUBES
DrenaPave™ 80mm Thickness		4FP	125mm x 250mm x 80mm Approximate 5" x 10" x 3 1/8" (PSF = 2.96 stones @ 35.5#) (MINIMUM STOCK Item - LEAD TIME REQUIRED) <i>- NOT SOLD BY THE BAND</i>	81 SF 2876# (240 pcs)
DrenaMontage™ 60mm Thickness		4FPM	Package includes: 3 sizes mixed: Small Square - 150mm x 150mm x 60mm Approximate 5 7/8" x 5 7/8" x 2 3/8" Large Rectangle - 150mm x 300mm x 60mm Approximate 5 7/8" x 11 7/8" x 2 3/8" Large Square - 300mm x 300mm x 60mm Approximate 11 7/8" x 11 7/8" x 2 3/8" <i>- SUITABLE FOR MECHANICAL INSTALL</i> <i>- NOT SOLD BY THE BAND</i>	92.04 SF 2557# (15.34 SF per layer)

NOTE: PERMEABLE PAVEMENTS MUST BE MAINTAINED

BENEFITS OF PICP

- A stormwater management solution that functions as a pavement and does not take up costly extra space
- Reduces harmful runoff
- Naturally filters out pollutants (nitrates, phosphorous, oil, grease, etc.) and cools the water as it infiltrates the system
- Same durability and strength as the traditional Interlocking concrete pavements (ICP)
- Does not frost, heave or crack
- No ice formation on the pavement in cold climates
- Easy to maintain the infiltration rate over time
- LID and BMP tool
- Meets 100% infiltration requirements with 13% void space
- ADA Complaint
- Joint width configuration accommodates larger aggregate which allows higher surface infiltration rates and maintains those same rate on slopes
- Because of its shape, the adjoining pavers meet at flat surfaces, creating a superior interlocking pavement system. This is imperative on heavy vehicular traffic applications
- Can be mechanically installed with ease and efficiency
- Saves time and money

DRENA™ SERIES

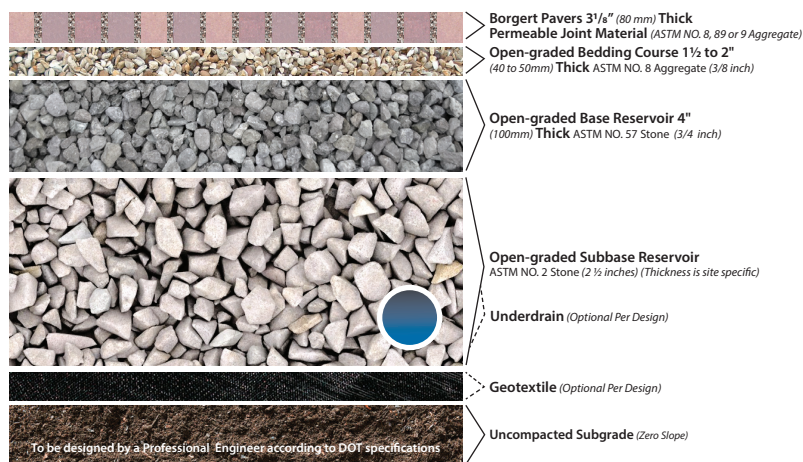
DrenaPave™ & DrenaMontage™



PERMEABLE INTERLOCKING CONCRETE PAVEMENT SYSTEM (PICP)

COMPOSITION & MANUFACTURE

Cross-section of Permeable Pavement - Full Exfiltration



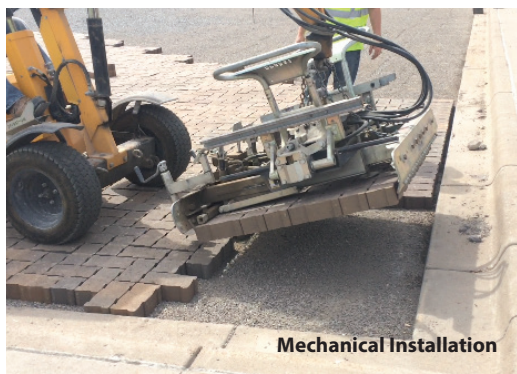
- Pavers exceed industry standards: 8,000 psi - 5% absorption
- Meets or exceeds ASTM C-936 and freeze-thaw testing per section 8 of ASTM C-67
- Manufactured with type A aggregates
- Associated with a range of LEED credits
- ADA Compliant

Written detailed specification information is available, call or visit our website at borgertproducts.com.

**NOTE: PERMEABLE PAVEMENTS
MUST BE MAINTAINED**

Specify base material that meets State DOT specifications for Type A aggregate

Rainwater runoff goes through the joints in between the pavers and back into the groundwater. Instead of collecting pollution and debris and decreasing water quality, water is filtered and slowly reintroduced into the ground.



borgertproducts.com
800.622.4952

MAIN OFFICE: 8646 Ridgewood Road | P.O. Box 39 | St. Joseph, MN 56374 | PHONE 320.363.4671 | FAX 320.363.8516
PERMANENT OUTDOOR DISPLAY: MN State Fair Grounds | East Side of Underwood St. | Between Lee & Randall Avenues